



# Platforms

**3S PLATFORM  
CONCRETING PLATFORM „L“  
CLIMBING PLATFORM**

**LET'S  
BUILD**





ZENTRALE STANDORT REGAU

Our head office and the heart of the company is the 111.000 m<sup>2</sup> manufacturing and logistics facility based in Regau, Austria. Incorporating worldwide distribution to over 50 countries and providing a centre of excellence for research and development makes RINGER a formidable formwork and scaffolding manufacturer.

With subsidiaries in Slovenia, Croatia, Hungary, Czech Republic and Germany, RINGER provides first class design solutions and on-site supervision for the most complex of projects.

Supporting international customers worldwide makes RINGER the ideal partner for all construction needs.

## Your reliable partner for scaffolding and formwork.

### RINGER quality since 1944:

- Flexible and quick solutions
- Absolute reliability
- Personal consultation on site
- Fast customised solutions
- We keep our promises
- With absolute passion
- A real family-run company

**What are we waiting for?  
Let's build.**





## Concreting with more convenience and safety

RINGER PLATFORMS GUARANTEE FLEXIBLE AND SAFE USAGE.

YOU CAN RELY 100% ON RINGER QUALITY DURING ASSEMBLY. OUR EQUIPMENT MEETS YOUR CONSTRUCTION NEEDS.

Different options are available, depending on the application, the demanded flexibility and the load capacity needed on site.

- **3S platform** (max. 300 kg/m<sup>2</sup>)
- **Concreting platform "L"** (max. 200 kg/m<sup>2</sup>)
- **Climbing platform** (max. 600 kg/m<sup>2</sup>)





## 3S platform

THE VERSATILE PLATFORM FOR EVERY APPLICATION.

The RINGER 3S platform is our most versatile platform solution. By simply changing the suspension, it can be used as a concreting platform, climbing platform, working scaffolding or protection- scaffolding.

The RINGER 3S Platform enables fast and safe handling, allows efficient storage and logistics as well as cleanness and order in the storage place, on the construction site or truck.

Thanks to a platform thickness of 45 mm and the sturdy steel construction, it can withstand loads of up to 300 kg/m<sup>2</sup>. Your company logo can also be imprinted on request.

# Product features

## 3S platform - safe, fast, clean

### > Powerful+

- Loads up to 300 kg/m<sup>2</sup>
- Length 2.5 or 3.0 m (special lengths on request)
- Platform thickness 45 mm

### > Wide range of applications as

- Concreting platform, climbing platform, working scaffolding, protection scaffolding or roof safety barrier

### > Safe

- Self-closing safety locks
- Folding, closed side panel
- Milled edge protection at the front edge

### > Quick

- Prefabricated unit
- Quick and easy to assemble

### > Clean

- Tidiness on the construction & storage site
- Space saving for truck transport

| Art. No. | Description  | Weight    |
|----------|--|-----------|
| 10003004 | 3S platform, 3.0 m, size 2                             | 148.00 kg |
| 10003003 | 3S platform, 2.5 m, size 1                             | 125.00 kg |
| 10001524 | 3S intermediate platform                               | 148.00 kg |
| 10001661 | 3S concreting bracket, galvanised                      | 19.50 kg  |
| 10003053 | 3S corner platform 1.5 x 1.5 m, without railing        | 91.00 kg  |
| 10003052 | 3S side guardrail, set for corner platform 1.5 x 1.5 m | 49.00 kg  |
| 10002282 | 3S corner platform 90-110°, without railing            | 80.00 kg  |
| 10002814 | 3S steel railing for corner platform, galvanised       | 21.80 kg  |
| 10003743 | 3S support shoe for corner platform, galvanised        | 4.30 kg   |
| 10003002 | 3S bracket, galvanised                                 | 30.50 kg  |
| 10001593 | 3S extension for bracket                               | 31.80 kg  |
| 10003912 | 3S lowering beam, adjustable 0.25 - 1 m, galvanised    | 17.00 kg  |
| 10004060 | 3S suspension shoe for precast wall, galvanised        | 2.00 kg   |

# Wide range of applications

## 3S platform



### Corner platform

The 3S corner platform is available as both an inside and an outside corner. The railing as well as the mounting are fixed by a plug-in device.



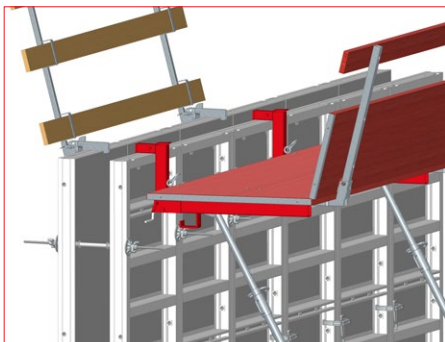
### Corner platform

The 3S corner platform allows easy creation of 90° corners. The platform is placed onto the neighbouring platforms. It can be positioned at an angle between 90° and 110°.



### Bracket extension

The bracket extension allows wall openings to be bridged. The adjusting shoe covers an adjustment range from 270 cm to 375 cm.



### Can be used as a concreting platform with concreting bracket

In combination with the concreting bracket, the 3S platform becomes a convenient concreting platform. The adapter is installed on the platform. Suitable for all formwork systems up to 12.5 cm profile width.



# Clever details

## Optimum handling



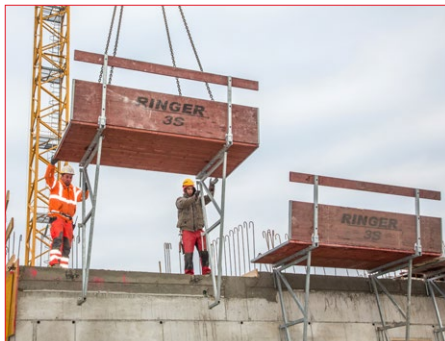
### Platform for precast walls

The 3S-suspension shoe for precast walls allows the 3S platform to be hooked into double-shell precast walls. The plastic installation set that allows easy removal from the concrete is a major benefit here.



### Climbing platform

In combination with the 3S climbing platform adapter, the 3S platform can also be used as a climbing platform..



### Easy installation by crane

The 3S platform can be easily lifted and positioned by crane using four chain strands.



### Space-saving

The platforms are stacked for storage and transport; dedicated transport containers are available for the brackets.

- Tidiness on the construction site
- Tidiness at the storage site
- Space-saving for transport and storage
- Crane fork for efficient and easy handling



## Concreting platform “L”

THE READY-TO-ASSEMBLE UNIT FOR SYSTEM-INDEPENDENT APPLICATION.

The lightweight concreting platform “L” is delivered to the construction site as a ready-to-assemble unit and can be easily attached to the formwork by crane.

The automatic anti-lift-out protection and the laminated and impregnated wooden floor guarantee maximum safety on the construction site. Precise workmanship and hot-dip galvanised metal parts ensure a long service life.

The RINGER concreting platform “L” is suitable for all standard formwork systems with a profile width from 10 to 12.5 cm and can also be used for horizontal elements by inserting an H20 beam.



# Product features

## Concreting platform “L”

### > Powerful

- Loads up to 200 kg/m<sup>2</sup>
- Length 2.70m
- Width 1.00 m
- Low weight of 66 kg

### > Wide range of applications

- Suitable for all standard formwork systems (aluminium & steel)
- For all profile widths from 10 to 12.5 cm
- Also for use with precast walls

### > Sturdy and weather-resistant

- Hot-dip galvanised steel construction
- Laminated and impregnated wooden floors

### > Fast and safe working

- Automatic anti-lift-out protection
- Ready for use within minutes
- Simply hook in with the crane
- No parts to be lost

### > Clever product design

- Ready for assembly with folding railing
- Low stacking height

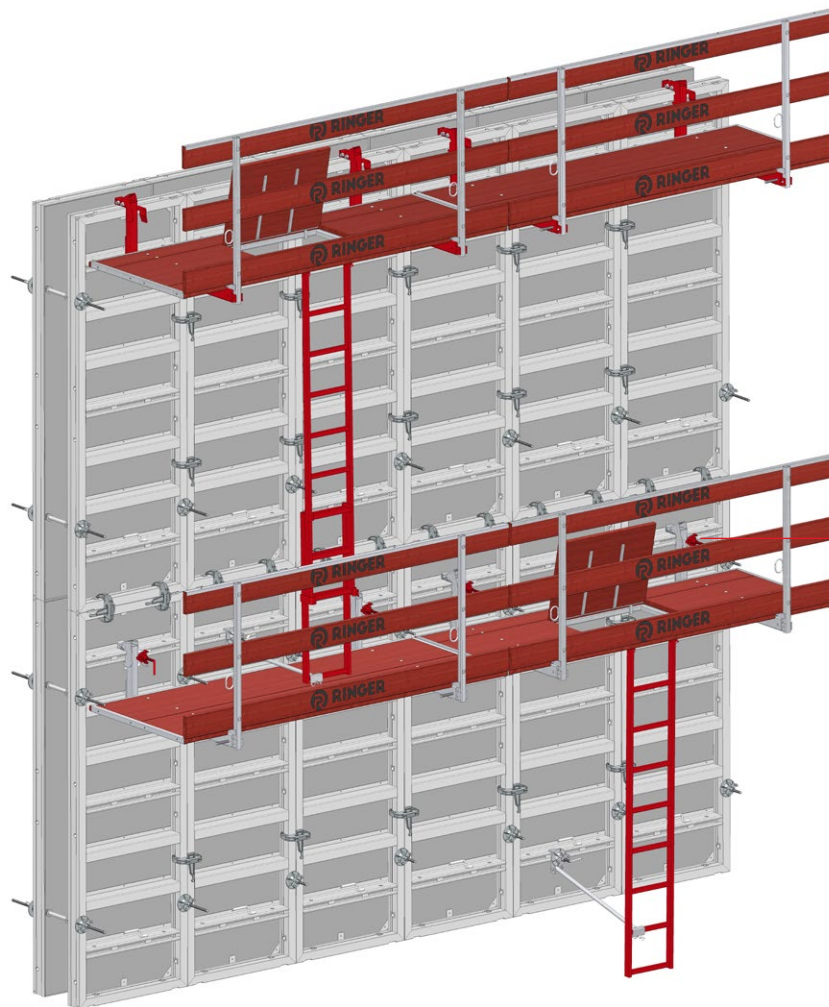
### > High cost-effectiveness

- Long service life
- Low storage and transport volume

| Art. No. | Description   | Weight   |
|----------|---|----------|
| 10001019 | Concreting platform “L”, 2.70 m, complete           | 66.00 kg |
| 10002245 | Concreting platform “L”, 2.70 m, with access hatch  | 66.00 kg |
| 10000694 | Assembly adapter for concreting platform “L”        | 2.00 kg  |
| 10004535 | Ladder 270 for concreting platform “L”, galvanised  | 15.00 kg |
| 10004536 | Ladder extension 330 for concreting platform “L”    | 12.00 kg |
| 10000313 | Distance bracket for ladder for concreting platform | 6.00 kg  |

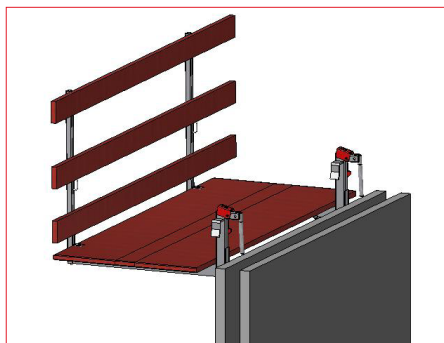
# Clever product design

## Concreting platform "L"



The concreting platform "L" can be attached either to the top of the formwork or to the function profile of the formwork. The assembly adapter for concreting platform "L" is required for this.

Assembly adapter for concreting platform "L"



### Use with precast walls

In combination with the adapter for precast walls, the concreting platform "L" can also be hooked into precast walls. The plastic installation set for precast walls allows the brackets to be easily removed from the concrete wall.



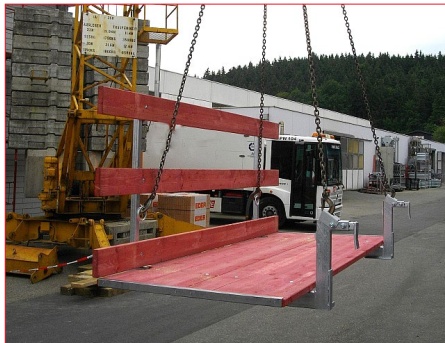
# Clever details

## Quick assembly



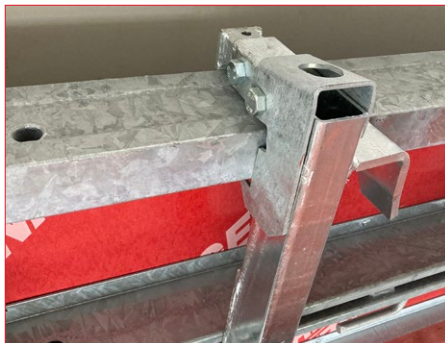
### Open and secure the railing

The concreting platform is delivered to the construction site ready for assembly. The railing is opened and secured.



### Attach the crane sling

The four crane slings are attached to the attachment points so that the platform can be easily moved and positioned.



### Check the anti-lift-out protection device

After attaching the slings, check that the anti-lift-out protection device on the formwork is engaged correctly.



### Concreting platform with ladder

The concreting platform is also available with access hatch and convenient ladder.



## Climbing platform

THE SOLID BRACKET PLATFORM FOR USE AS WORK, SAFETY AND CLIMBING SCAFFOLD.

The pre-assembled unit is ideally suited for use with climbing formworks, thanks to its sturdy design. The galvanised steel and the laminated and impregnated wooden floors make this platform particularly durable. The automatic anti-lift-out protection device ensures safety during work.

Dismantling time is significantly reduced by the fact that only one bolt has to be removed. The climbing platform can be easily moved by crane and is designed for standard climbing cones or mushroom-head anchors.



# Product features

## Climbing platform

### > Powerful

- Loads up to 600 kg/m<sup>2</sup>
- Length 3.00 m / 2.50 m
- Width 1.80 m
- Bracket spacing 1.50 m
- Platform thickness 45 mm

### > Wide range of applications as

- climbing scaffolding, work scaffolding, safety scaffolding

### > Sturdy and weather-resistant

- Hot-dip galvanised steel construction
- Laminated and impregnated wooden floors

### > Fast and safe working

- Ready-to-assemble unit of sturdy system components
- Automatic anti-lift-out protection
- Ready for use within minutes
- Simply hook in with the crane
- Folding handrail

### > High cost-effectiveness

- Long service life
- Low storage and transport volume

| Art. No. | Description                                 | Weight    |
|----------|---|-----------|
| 10004346 | Climbing platform 3.0 m                     | 247.00 kg |
| 10002247 | Climbing platform 2.5 m                     | 240.00 kg |
| 10000966 | Corner panel for climbing platform          | 118.00 kg |
| 10002076 | Single bracket for climbing platform        | 50.00 kg  |
| 10000978 | Supporting extension for climbing platform  | 46.00 kg  |
| 10000210 | Corner platform left for climbing platform  | 230.00 kg |
| 10000968 | Corner platform right for climbing platform | 230.00 kg |
| 10004909 | Mushroom-head anchor DW15-165 galvanized    | 0.81 kg   |
| 10002797 | Power Comp anchor sleeve DW15-170 plastic   | 0.06 kg   |
| 10002798 | Nail cone DW15 for Power Comp anchor sleeve | 0.02 kg   |

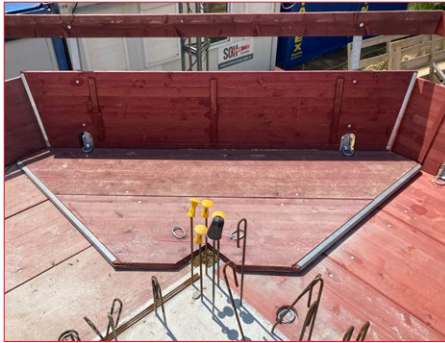
# Sophisticated solutions

## Climbing platform



### Corner platform left and right

The corner platform allows an inside corner to be created. It is hooked in like the climbing platform and has a free transition to the next platform in the area of the railing.



### Corner platform

The corner platform serves to create a safe scaffold at the outside corner. It is simply placed onto the two climbing platforms in the corner area.



### Support extension

The support extension is primarily used to bridge openings in the wall. It can be adjusted variably between 1.40 and 3.60 m at increments of 20 cm.



### Single bracket

Single brackets can be used to bridge remaining areas. They are hooked in and serve to hold scaffold posts.



# Quick and safe assembly

## Sturdy and strong



### Open the railing and attach to the crane slings

The concreting platform is delivered to the construction site ready for assembly. The railing is opened and secured.



### Open the brackets and insert into anchor cones

Lift the platform slightly with the crane and open the brackets; the platform can then be hooked in. The platforms are secured using standard climbing cones or mushroom-head anchors.



### Check the anti-lift-out protection device

After inserting, check that the anti-lift-out protection device is engaged correctly.



### Optimum safety during climbing

The push-pull props of the climbing formwork can be optimally attached with special push-pull prop bolts.

# LET'S BUILD



**RINGER** GmbH

A-4844 Regau  
Römerweg 9  
+43 7672 72711 - 0  
[office@ringer.at](mailto:office@ringer.at)  
[www.ringer.cc](http://www.ringer.cc)

