

www.ringer.cc



RINGER –

Your reliable partner.

Finding solutions. Supplying quality. Keeping promises.

**LET'S
BUILD**



RINGER
SCAFFOLDING + FORMWORK

Master PRO

Wall formwork operated from one side



Alu Master

Fast forming with and without crane



AluDEK

High-speed forming



DEKplus

Large scale slab formwork system



LET'S
BUILD

What matters.

RINGER is your reliable partner for scaffolding and formwork. RINGER has been operating successfully on the market for almost 80 years – with presence and partners almost all over Europe.

QUALITY FROM AUSTRIA

Our scaffolding and formwork meet the highest standards worldwide and will impress you day after day. Developed and produced at our headquarters in Regau, Upper Austria – quality made in Austria.

RINGER quality is characterised by high load-bearing capacity, simple handling and quick installation. Perfectly coordinated systems that accelerate work on the construction site and increase safety.

A STRONG FAMILY BUSINESS

As a family-run company in the third generation, with more than 300 employees throughout Europe, we rely on **lean structures and short communication channels** – even to company management. This allows the suitable product and perfect solution to be offered **quickly and flexibly** on every construction site.

Customers in more than 50 countries appreciate the high-quality solutions from **RINGER** as well as their punctuality and trustworthiness. Because trust is binding – on every site.

FIND OUT MORE:



Count on us



Markus Ringer
Sales Director Austria



Thomas Ringer
Sales Director International

We at RINGER are proud of our family values, which have been deeply rooted over generations. Apart from highest quality standards and innovative strength, it is these values that have made RINGER so greatly appreciated by customers worldwide:

FINDING THE BEST SOLUTION.

SPEED AND FLEXIBILITY.

STRICT ADHERENCE TO DEADLINES.

REAL QUALITY YOU CAN TRUST.

WE KEEP OUR PROMISES.

Because RINGER is not only our product. RINGER is our name.
RINGER stands for quality, reliability and tradition.

LET'S BUILD

At our state-of-the-art factory in the Upper Austrian municipality of Regau, our employees work on meeting the diverse requirements of the building industry with the help of the latest technology. Tube lasers, welding robots and lots more guarantee precise production at the very forefront of technology.



BEST SUPPLIER IN AUSTRIA

No wonder RINGER is so highly rated by its customers: In 2024, for the ninth time in succession, RINGER was voted Austria's best formwork supplier by readers of the trade journal "SOLID – Wirtschaft und Technik am Bau".

**A great award that motivates and
compels us – LET'S BUILD!**



Master PRO

Wall formwork operated from one side for
high-speed forming

**LET'S
BUILD**

* Arbeitszeit-Richtwerte im Hochbau (ARH) [working time reference values in building construction], Handbuch Arbeitsorganisation Bau "Schararbeiten/Systemschalung Wände 2022", published by Zeittechnik.

FORMING IN RECORD TIME WITH THE INNOVATIVE MASTER PRO FROM RINGER – NO WALL FORMWORK IS FASTER:*

- Time savings of over 30% in forming and stripping
- Anchoring on one side by only one person
- Up to 38% fewer tie points
- One-step wall thickness setting
- Up to 80 kN/m² concrete pressure
- Only 2 rows of ties at 3m formwork height

See the benefits of Master PRO on video:



Master PRO anchor detail

Master PRO stands for highest efficiency levels, simple handling and excellent exposed concrete quality – well thought-out in every detail.



Master PRO anchor





Alu Master Steel Master

Heights of up to 3m for large-scale
forming with and without crane.

**LET'S
BUILD**

OUR HIGH-PERFORMANCE FORMWORK FOR LARGE-SCALE FORMING SAVES RESOURCES, TIME AND MONEY:

Steel Master

- High-performance, flexible and robust
- Up to 80 kN/m² concrete pressure
- Height: 1.35 m / 2.70 m / 3.30 m



Alu Master

- No need for a crane thanks to low weight
- Up to 60 kN/m² concrete pressure
- Height: 0.90 m / 1.35 m / 1.50 m / 2.70 m / 3.00 m
- Available in any colour

Alu Master
reinforced hollow
profile



Steel
Master
element



Alu
Master



System 2000

Lightweight, flexible framed formwork
in aluminium or steel

**LET'S
BUILD**

AUSTRIA'S MOST POPULAR HAND-SET FORMWORK – PARTICULARLY LIGHT, RESISTANT AND VERSATILE:

- Construction height: 1.35 m / 2.70 m / 3.00 m
- Crane independent
- Many panel sizes; special widths also possible
- AL2000: extremely light – only 21 kg/m²
- AL2000: combinable with AluDEK slab formwork

Further information:



AL2000
construction
site

AL2000 and
ST2000 from
RINGER – the flexible
all-rounders
on every
construction site.



AL2000



AL2000
with Alkus



ALUDEK

High speed forming at its best.

**LET'S
BUILD**

*Arbeitszeit-Richtwerte im Hochbau (ARH) [working time reference values in building construction], Handbuch Arbeitsorganisation Bau "Scharbeiten/Systemschalung Decken 2023", published by Zeittechnik.

AluDEK
element

WITH THE TIME AND COST- SAVING ALUDEK, RINGER HAS SET BENCHMARKS IN HIGH- SPEED FORMING:

- Fastest floor plan formed, stripped and cleaned in 0.14 h/m²*
- Ultralight: only 16 kg/m²
- Main panel 1.35 m x 1.35 m (1.82 m²)
- One AluDEK head for all application areas
- Easy assembly and dismantling
- 100% compatible with DEKplus slab table
- Ideally combinable with AL2000 wall formwork

**AluDEK from
RINGER sets
new standards on the
construction site –
this is slab formwork
today!**

**Quick & simple
on video:**





DEKplus

Large scale slab formwork system

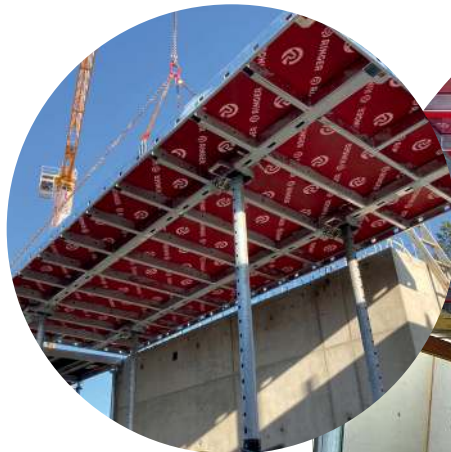
**LET'S
BUILD**

THE NEW SOLUTION FROM RINGER FOR HIGH-SPEED SLAB FORMING BY CRANE:

- 2 panel sizes: 5.40 x 2.25 m (12.15 m²) and 5.40 x 1.80 m (9.72 m²)
- Slab thicknesses of up to 70 cm possible
- Profile height of only 12 cm
- Tool-less assembly of safety components, such as platforms and side protection
- Ideally combinable with RINGER AluDEK modular slab formwork

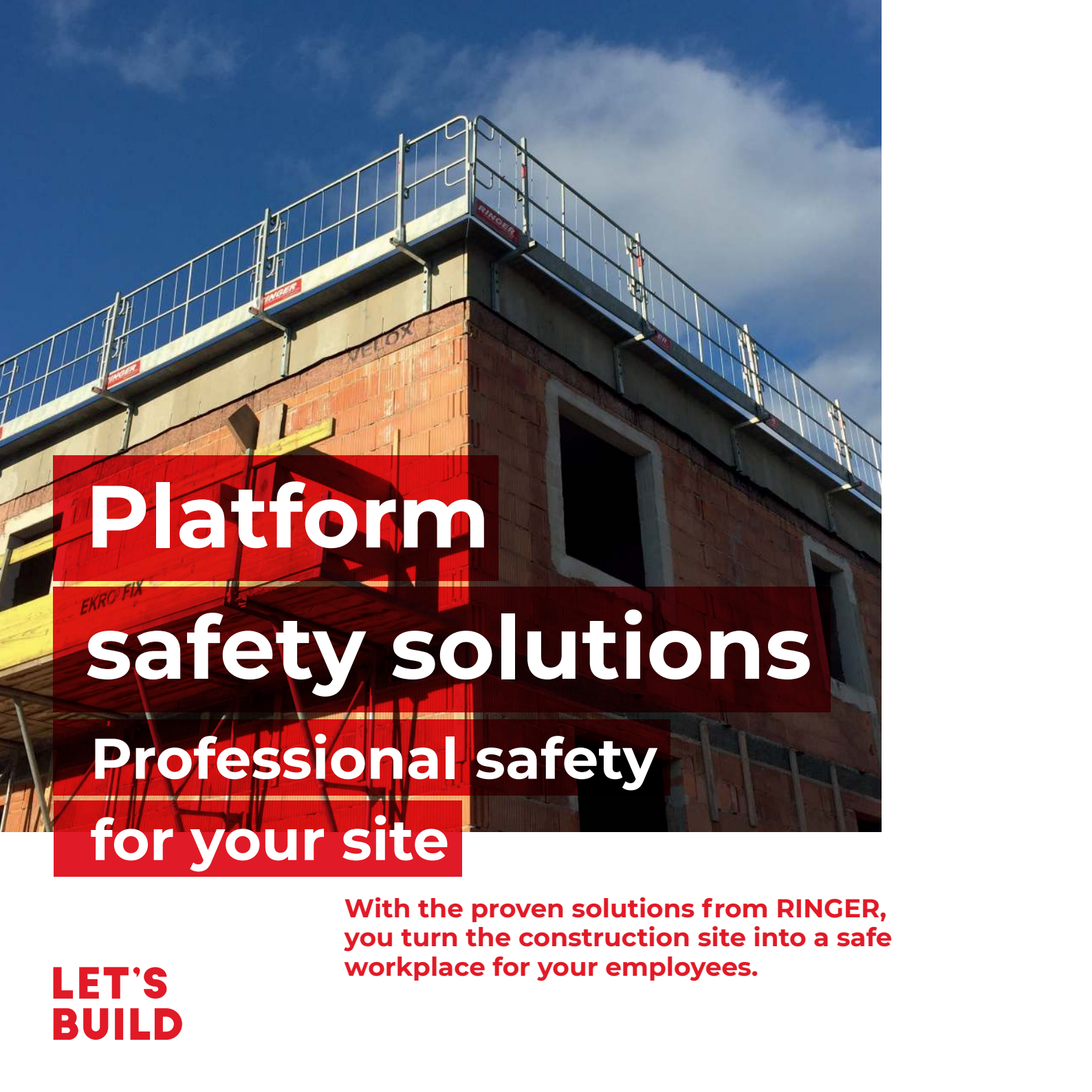
**DEKplus is quick, simple and clean –
compatibility and flexibility for
every floor plan.**

**DEKplus & AluDEK
maximum
compatibility**



**Watch the
video:**





Platform safety solutions

Professional safety
for your site

**LET'S
BUILD**

With the proven solutions from RINGER, you turn the construction site into a safe workplace for your employees.

PLATFORMS

The flexible platforms and brackets from RINGER combine high quality with easy handling. Simply select the suitable solution for your application:

- 3S platform for max. 300 kg/m²
- Concreting platform "L" for max. 200 kg/m²
- Climbing platform for max. 600 kg/m²

3S platform



SIDE PROTECTION

The variously combinable side-protection solutions from RINGER are ideally suited to use on slab formwork, wall formwork, as slab edge protection or as fall protection on the shell construction:

- Side protection grid / DEKsafe
- Guardrail clamp
- Protective railing with UNI clamp

Concreting platform "L"



Side protection grid DEKsafe





Scaffolding

Fastest facade scaffolding from

Austria's market leader

**LET'S
BUILD**

EASY TO USE, QUICK ASSEMBLY AND DISASSEMBLY

Scaffolding solutions from RINGER offer highest levels of quality and operational safety. Special connectors, such as the quick-lock invented by RINGER, and the lack of unnecessary small parts enable swift installation at minimum cost.

- Quick and simple assembly with only 3 main parts
- Clever brace securing system
- Galvanised, dip-coated or made of aluminium
- Classic scaffolding from Austria

Deutsches
Institut
für
Bautechnik

DIBt

Compact, versatile and cost-effective. – ideal as facade scaffolding, work scaffolding, catch scaffolding and protective roofing.

Painted double railing scaffolding

Module Scaffolding Tower

Galvanised double railing scaffolding



LET'S BUILD



RINGER GmbH

4844 Regau, Austria
Römerweg 9
+43 7672 72711 - 0
office@ringer.at
www.ringer.cc



RINGER
SCAFFOLDING + FORMWORK